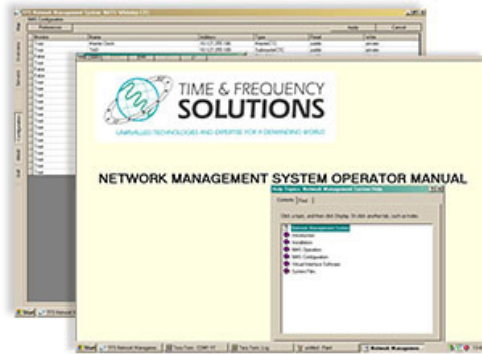


# NMS

## Network Management System

This sophisticated windows-based application allows the user to monitor and control TFS products from a remote or central location via an Ethernet network.



### Features

- Centralised or remote monitoring and control of TFS Time & Frequency System and component parts
- User-friendly graphical interface allows monitoring in overview or detail mode
- Visual representation of instrument front panel (in event of no available panel display an equivalent virtual display is shown)
- Fault log reporting on errors occurring in the Time & Frequency System
- Monitoring Status e.g. Alarms, Software and Hardware Faults Errors, Serial number details
- Flexible options such as different platforms, customisation or delivered on a pre-configured PC.

### Options

#### Platforms

The Clock Management System is available for either Windows 32bit environments or Linux/Unix platforms.

#### Customisation

The Clock Management System may be customised to your specifications. For example, maps can be displayed in the graphical interface of the location of each timing systems. Please contact us for the full range of customisable options.

#### Pre-configured PC

Time & Frequency Solutions also offer the option of the Clock Management System supplied on a pre-configured Personal Computer for specific applications.

As we are always seeking to improve our products, the information in this document only provides general indications of product capability, suitability and performance, none of which shall form any part of any contract.